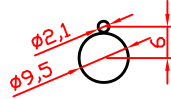


Customer panel example.
Maximum thickness: 3mm

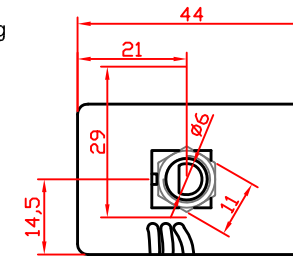
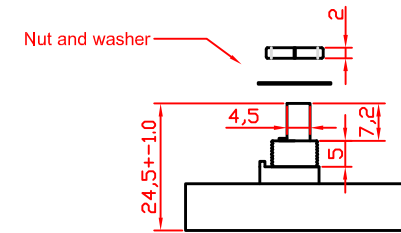
Suggested hole pattern in plate:



Number of connected lights:
Any number between 0 & 50 of Lopolight dimmable products can be connected to the same dimmer.

Full 0-100% control:
The dimmer varies the light output between 0 and 100%.
It is not mandatory to use switch (thus shown in example #1) when controlling single function lights.
Full dimming: turn knob counter clockwise.
Full brightness: turn knob clockwise.

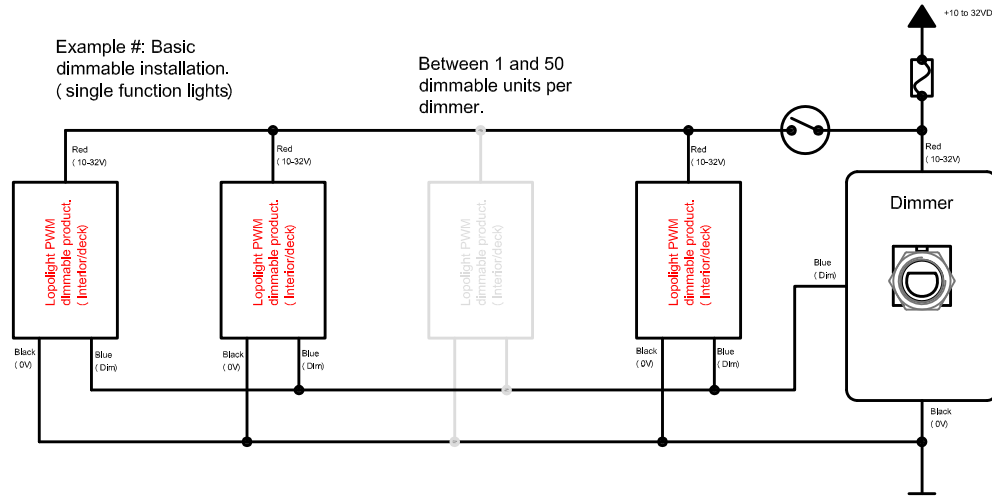
Mechanical details:



Potentiometer axel: Ø6 *4.5 "D" shape

Example #: Basic dimmable installation.
(single function lights)

Between 1 and 50 dimmable units per dimmer.

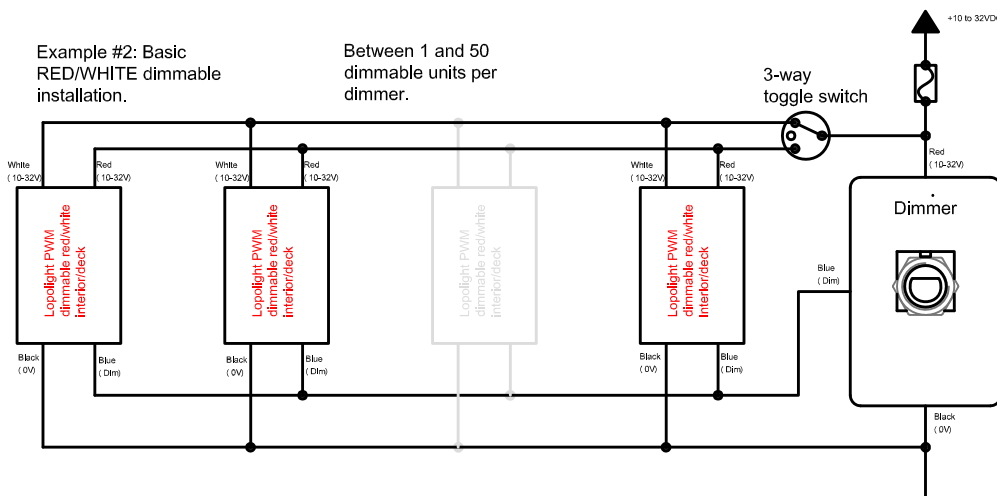


Suggested cabling:
Screened cable should be used for dimming signal wire when installing lights more than 20 meters away from dimming unit. The dimmer unit and the connected lights must share minus.



Example #2: Basic RED/WHITE dimmable installation.

Between 1 and 50 dimmable units per dimmer.



Wire length: ~250mm
RED: +10 to 32 VDC
BLACK: 0V
BLUE: DIMMING SIGNAL

Lopolight P/N: 400-126
PWM Dimming unit
Mechanical and basic installation.

Drawing no.:	Rev.: 1	Drawing date: 260512	Sign.: PHH
Scale: --	Format: A3	Revision date: 270512	Sign.: PHH
Material:		Tel.: DS 2768 Fine	



Bakkegaardsvej 513
DK-3050 Humlebaek
Denmark
info@lopolight.com
Tel. +45 32485030

Remark: File name: dimmer/installation 1.0

This drawing is our property, and may not be redistributed or copied without our permission.