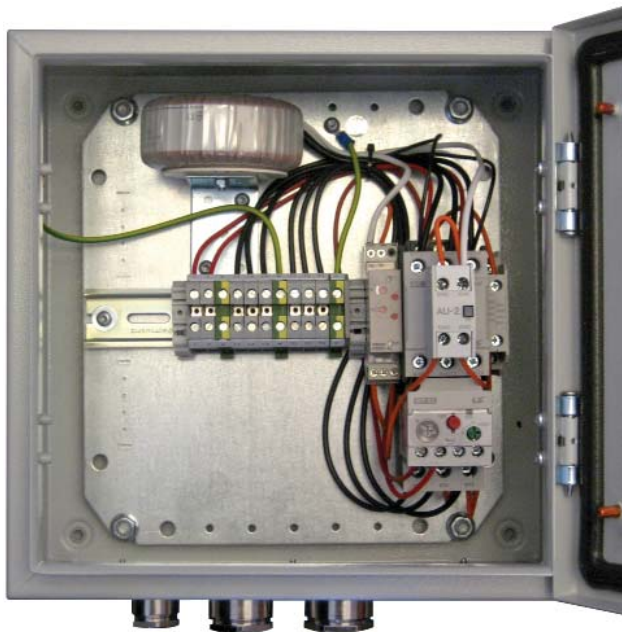


Contacteur Unit type TK 80 for Electro-Tyfon®



General Information

To protect the installation from excess current a thermal overload relay is built into the contactor unit.

The relay's set point is 13A and is set to automatic reset (A).

The function can be changed to manual reset (H), but in this case the overprotection has to be reset by the green pushbutton.

In addition the unit provides the ELECTRO-TYFON® with heating voltage that automatically switches off during signaling.

Name	Art. No.	Mains	Control voltage	Safety switch
TK80	24800233	Max 690 V AC	230V AC	No
<i>TK80</i>	<i>24800234</i>	<i>Max 690 V AC</i>	<i>110 V AC</i>	<i>No</i>
<i>TK80S</i>	<i>24800586</i>	<i>Max 690 V AC</i>	<i>230 V AC</i>	<i>Yes</i>
<i>TK80S</i>	<i>24800587</i>	<i>Max 690 V AC</i>	<i>110 V AC</i>	<i>Yes</i>

