

Monitoring

Electronic Crankshaft Deflection Indicator

LEMAG[®]

DI-5 & DI-5C

A time saving device for checking crankshaft deflection.



Product features

- Large measuring range
- Invar alloy extension bars for minimum heat expansion
- Backlit display
- Rechargeable lithium ion batteries
- Complete set with transducer, cable, extension bars and case
- Safe, robust and reliable

LEMAG DI-5C:

- Capable of storing 53 cylinder reports (up to 24 cylinders / engine)
- Prints and downloads data to a PC
- Clear documentation of honing result
- Can be equipped with an ovality kit to measure cylinder ovality

LEMAG®

DI-5 & DI-5C

LEMAG® DI-5 and LEMAG® DI-5C

The LEMAG® electronic crankshaft deflection indicators are time saving devices for checking crankshaft deflection.

The LEMAG® deflection indicators consist of a transducer with various extension bars made of invar alloy ensuring minimal heat expansion.

For portable use

They are delivered with a strong instrument case, rechargeable batteries and a charger.

Due to its simplicity, the deflection indicators can be used frequently for deflection checks, and therefore identify potential problems before they require expensive engine repairs.

LEMAG® DI-5

The LEMAG® DI-5 can be upgraded by the manufacturer to LEMAG® DI-5C without any needs to replace the entire device.

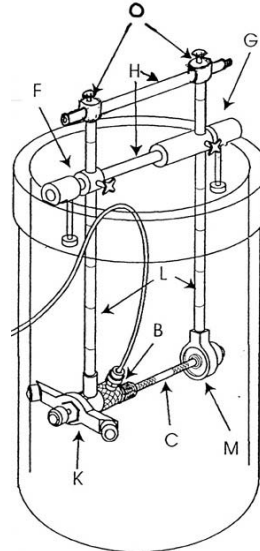
LEMAG® DI-5C

The LEMAG® DI-5C, is equipped with a microprocessor which enables the user to print and download measurement results. Supplied with USB interface connection cable and software.



Optional: LEMAG® DI-5C ovality kit

The optional LEMAG® DI-5C ovality kit is designed to measure cylinder liner ovality. The standard kit enables cylinder liner measurements for diameters between 180-600 mm and stroke up to 870 mm. Larger ovality kit sizes are also available on request.



Technical specifications

• Measuring distance	89 - 565 mm (60 mm optional)
• Measuring Range	+2.048 mm to - 2.048 mm
• Resolution	0.001 mm
• Zero balance range	+2.048 mm to - 2.048 mm
• Zero Drift	0.001 mm / 5 minutes
• Instrument operating range	0-55°C / 32-130°F
• Transducer operating range	0-80°C / 32-175°F
• Batteries	3.6 V rechargeable Lithium ion
• Battery life	10h / charge (shelf life 5 years)
• Extension bars	10, 20, 40, 80 and 2 x 160 mm
• Cable length	7 metres
• Weight	Instrument 1.1 kg (aluminium) Transducer 0.5 kg Case 2.7 kg (wood w/foam)
• Dimensions	Instrument 190 x 167 x 50 mm Transducer Ø 31 mm, L 81 mm Case 300 x 280 x 140 mm