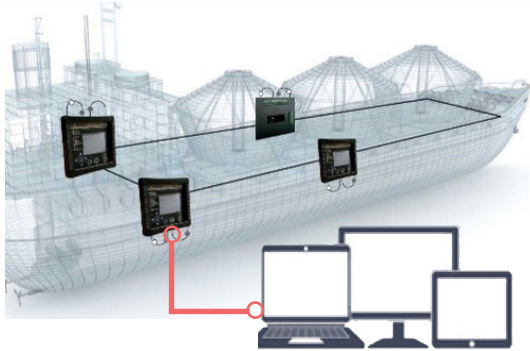




# PHOENIX MONITOR

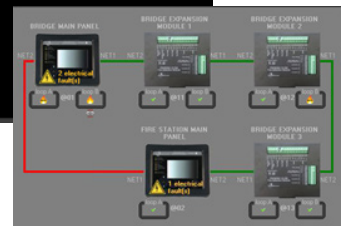
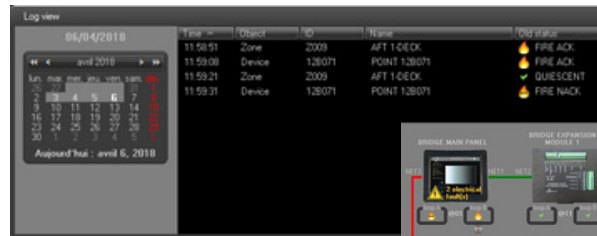
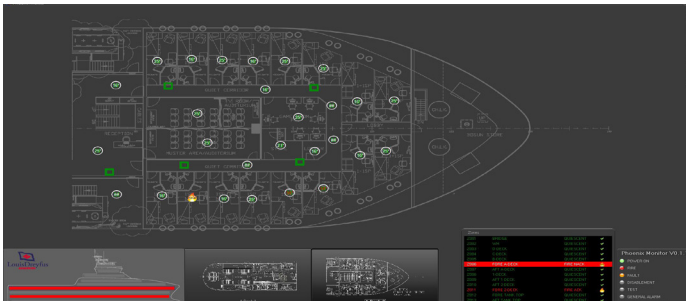
Addressable fire detection



## PRESENTATION

Phoenix Monitor is a software developed by MARINELEC that combines with the Phoenix V2 fire detection panel to provide an ergonomic graphical interface for the ship's fire detection system.

- ▶ Fully customizable by the user
- ▶ Clear and visual display of any event
- ▶ Faster decision making & intervention
- ▶ Historization of events for analysis



## FUNCTIONAL CHARACTERISTICS

### Hardware configuration

License on USB key to be implanted on a PC base with at least:

- ▶ 512MB of RAM
- ▶ O.S Windows 10, 7 (64bits)
- ▶ Communication port configured for RS485 or a USB port with USBRS485 converter (Modbus RTU protocol).
- ▶ Full HD display resolution: 1920 x1080.

Capacity up to 2 online operator stations (master & slave)

### Software configuration

The Phoenix monitor software allows the following customization :

- ▶ Import and assignment of the different views of the vessel (general profile, section by deck, etc ....)
- ▶ Automatic import of the system configuration via the Phoenix V2 panel.
- ▶ Assignment of each zone & point on the views by «drag & drop».

### User interface

- ▶ Global monitoring on profile view and by bridge.
- ▶ Status display and diagnostics by zone & point.
- ▶ Diagnosis of the Phoenix V2 network (communication, loop, electrical network, etc ...).
- ▶ History of events.

## REFERENCES ET OPTIONS

- ▶ LICHW\_PHOENIXMONI : PHOENIX MONITOR License



sail safely

